

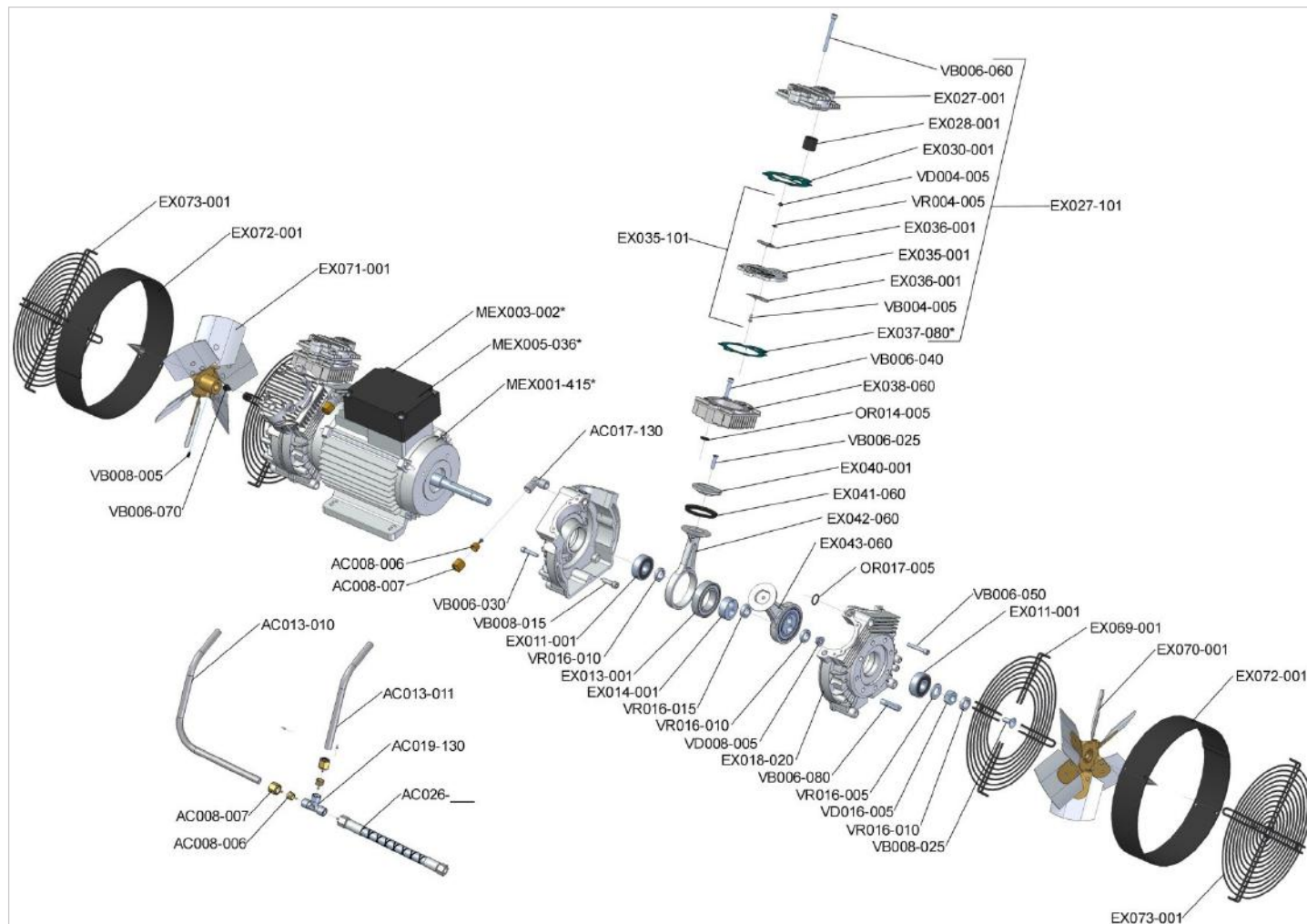
# Onderdelentekening (spare parts)

KZ 480-50

Pompgroep 230 Volt 50 Hz (unit pomp 230 Volt 50 Hz)

Bestand (file) EX001-004 Rev.00

Datum (date) 12/02/2011



Code (code)	Omschrijving (description)	Aantal (quantity)	Code (code)	Omschrijving (description)	Aantal (quantity)
AC008-006	Ogive for aluminum tube 12mm		VB006-030	Screw	
AC008-007	Nut for tube 12 mm aluminum		VB006-040	Screw	
AC013-010	Aluminum tube		VB006-050	Screw	
AC013-011	Aluminum tube		VB006-060	Screw	
AC017-130	Pipe felling "L"		VB006-070	Screw	
AC019-130	Pipe felling "T"		VB006-080	Screw	
AC026	Check tank drawing		VB008-005	Screw	
EX011-001	Bearing for compressor monobloc		VB008-015	Screw	
EX013-001	Bearing for connecting rod		VB008-025	Screw	
EX014-001	Handspike socket		VD004-005	Nut	
EX018-020	Compressor Monobloc		VD008-005	Nut	
EX027-001	Head		VD016-005	Nut	
EX027-103	Complete Head		VR004-005	Washer	
EX028-001	Filter		VR016-005	Washer	
EX030-001	Gasket head		VR016-010	Washer	
EX035-001	Valve plate		VR016-015	Washer	
EX035-101	Valve plate complete				
EX036-001	Valve				
EX037-080	Gasket cylinder 0,8				
EX037-050	Gasket cylinder 0,5				
EX037-030	Gasket cylinder 0,3				
EX038-060	Cylinder				
EX040-001	Piston top				
EX041-060	Piston seal				
EX042-060	Connecting rod				
EX043-060	Complete connecting rod				
EX069-001	Metal protection				
EX070-001	Metal fan right				
EX071-001	Metal fan left				
EX072-001	Metal cover fan				
EX073-001	Metal protection				
MEX001-415	Electric motor 2,5 Hp 230 Volt 50 Hz 1400 rpm				
MEX003-002	Cover condenser				
MEX005-036	Condenser 36 µF				
OR014-005	O-ring				
OR017-005	O-ring				
VB004-005	Screw				
VB006-025	Screw				

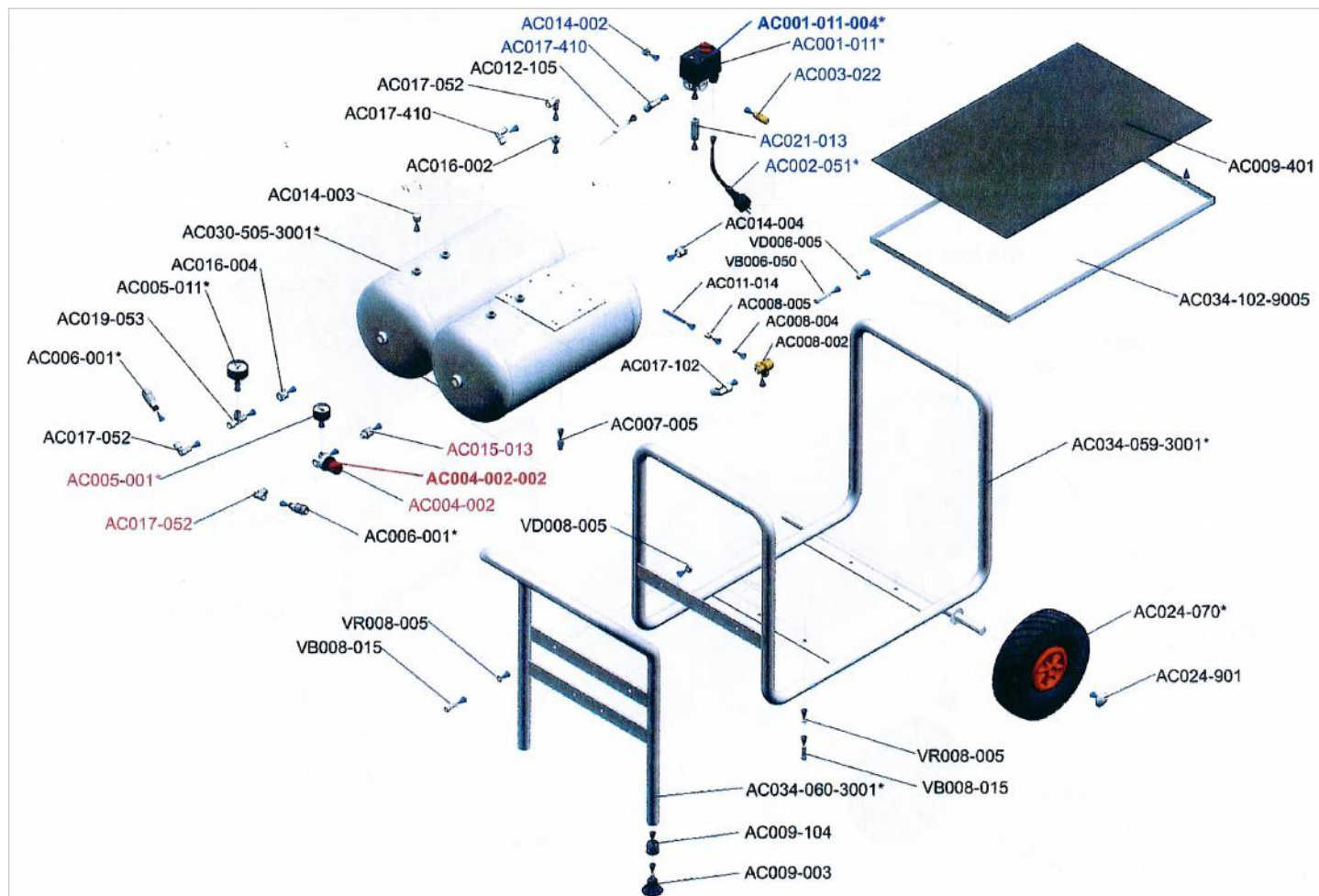
# Onderdelentekening (spare parts)

KZ 480-50

Tank met accessories 230 Volt 50 Hz (tank with accessories 230 Volt 50 Hz)

Bestand (file) EX002-008 Rev.00

Datum (date) 12/02/2011



Code (code)	Omschrijving (description)	Aantal (quantity)
AC001-011	Pressure switch 3/8" start open valve	
AC001-011-004	Pressure switch 3/8" complete	
AC002-051	Pin plug SHUKO 1,5 m	
AC003-022	Safety valve 10 Bar	
AC004-002	Pressure regulator MIGNON pos.2	
AC004-002-002	Pressure regulator MIGNON complete	
AC005-001	Manometer 40mm 1/4" Bar/Psi	
AC005-011	Manometer 50mm 1/4" Bar/Psi	
AC006-001	Universal coupler 1/4" Male	
AC007-005	Condensate drain valve	
AC008-002	Not return valve	
AC008-004	Ogive for rilsan tube	
AC008-005	Nut for rilsan tube	
AC009-003	Rubber foot with thread	
AC009-104	Rubber foot support 30mm	
AC009-401	Rubber mats	
AC011-014	Blue rilsan tube	
AC012-105	Rilsan tube	
AC014-002	Closure plug	
AC014-003	Closure plug	
AC014-004	Closure plug	
AC015-013	Nipple	
AC016-002	Reduction	
AC016-004	Reduction	
AC017-052	Pipe fitting "L"	
AC017-102	Pipe fitting "L"	
AC017-410	Pipe fitting "L"	
AC019-053	Pipe fitting "T"	

Code (code)	Omschrijving (description)	Aantal (quantity)
AC021-013	Connection	
AC024-070	Wheel	
AC024-901	Safety washer for wheel	
AC030-505-3001	Tank EXTREME TN 50L "RED"	
AC034-059-3001	Base frame	
AC034-060-3001	Frontal frame	
AC034-102-9005	Carry Tools	
VB006-050	Screw	
VB008-015	Screw	
VD006-005	Nut	
VD008-005	Nut	
VR008-005	Washer	